

# Installation Guide CMT-H

## Installation Guide for CMT-H Overhead Mounting Systems.

The CMT-H is a heavy-duty speaker ceiling mount with rotation and tilt functionality.

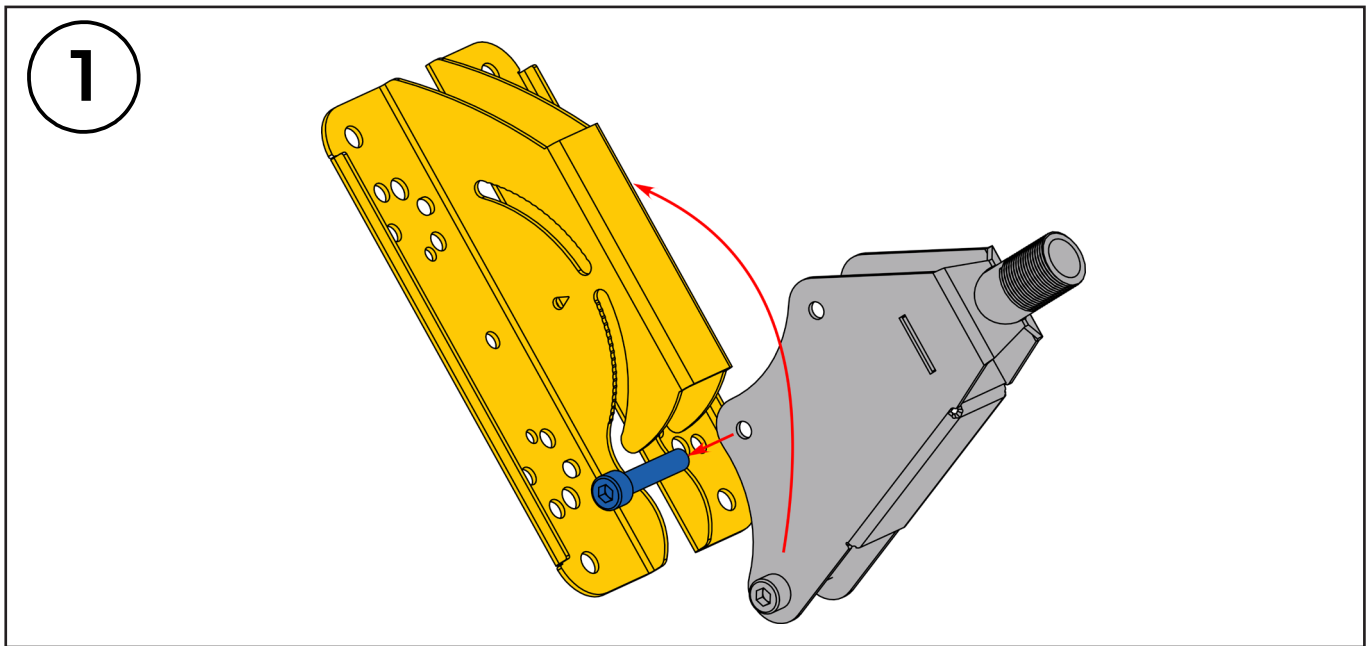


### SAFETY INSTRUCTIONS

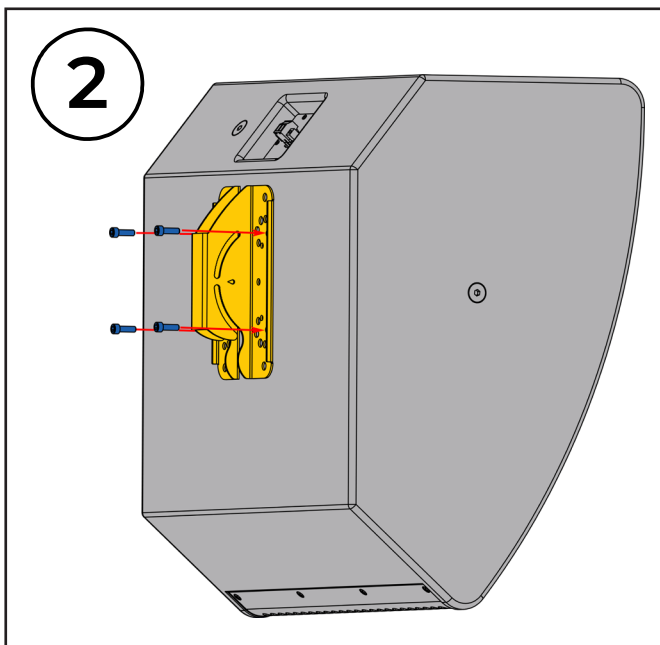
1. Only entrust loudspeaker mounting equipment to experienced professionals. Also strictly follow the provided safety instructions. Improperly installed mounting equipment may result in property damage, personal injury and/or liability for the installing contractor.
2. **Always use safety cables!** This will prevent equipment from falling during/after setup and while exploiting.
3. Always check if the wall surface is structurally strong enough to support load. Make sure the wall and/or ceiling structure allows to hold the weight of the speaker including its bracket.
4. Only use appropriate fasteners.
5. Always make sure to securely use and tighten/lock all mounting bolts provided. Loose bolts may become unscrewed over time due to vibration which could potentially create a safety hazard when not tightened securely.

# Installation Guide CMT-H

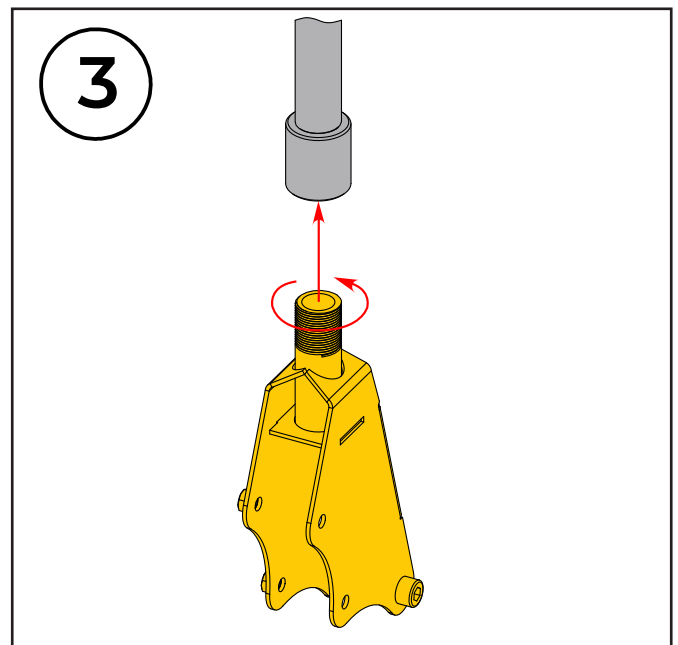
## Installation Instructions:



**1.** First, release the upper bolt which securing the speaker plate to the bracket. Now remove the speaker plate from the ceiling mount bracket.



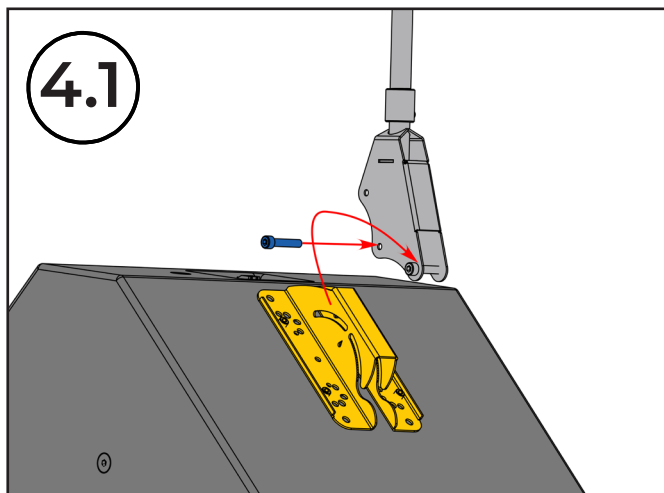
**2.** Screw the speaker plate to the rear (4) holes of the loudspeaker by using all (4) bolts.



**3.** Install the ceiling mount bracket (screw) onto the distance tubes that was pre-installed.

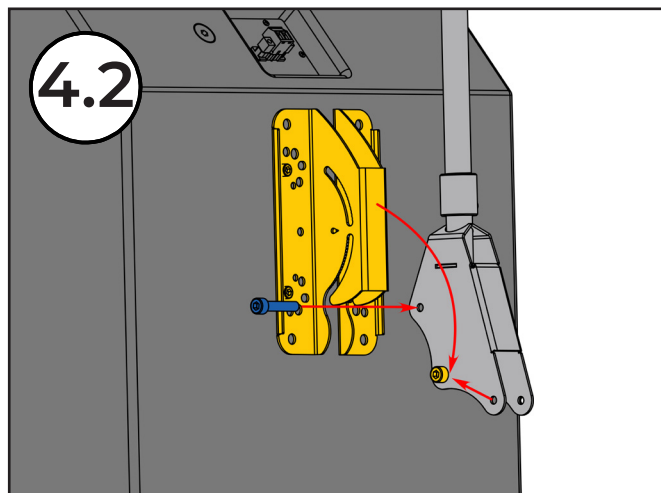
# Installation Guide

## CMT-H



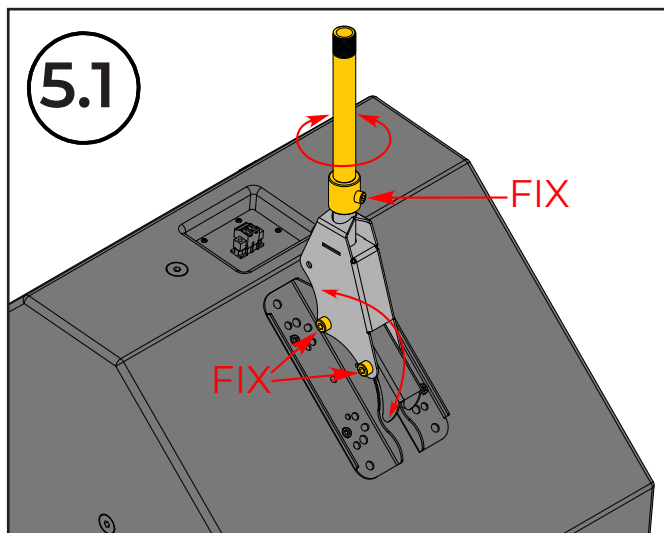
**4.1** First position if you need an attachment angle from 0° to 45°.

Slide the speaker plate along with the loudspeaker onto the lower bolt of the tilt mechanism. Press down on the top of the loudspeaker until it stops and then tighten the upper bolt of the speaker plate.



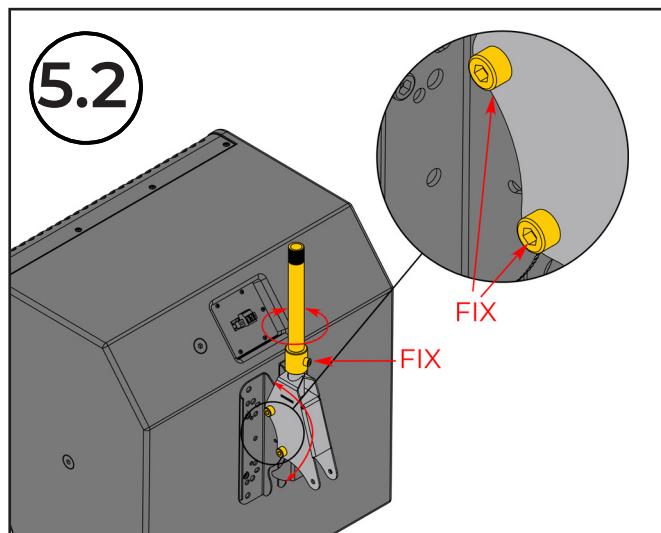
**4.2** Second position if you need an attachment angle from 45° to 90°. Move the screw to the second position on the ceiling mount bracket.

Slide the speaker plate along with the loudspeaker onto the lower bolt of the tilt mechanism. Press down on the top of the loudspeaker until it stops and then tighten the upper bolt of the speaker plate.



**5.1** First position. Rotate the ceiling mount bracket in the distance tubes to the desired speaker position and secure the screw.

Adjust the tilt angles of the loudspeaker as required and tighten the fixing bolts to lock in the position of the loudspeaker.



**5.2** Second position. Rotate the ceiling mount bracket in the distance tubes to the desired speaker position and secure the screw.

Adjust the tilt angles of the loudspeaker as required and tighten the fixing bolts to lock in the position of the loudspeaker.