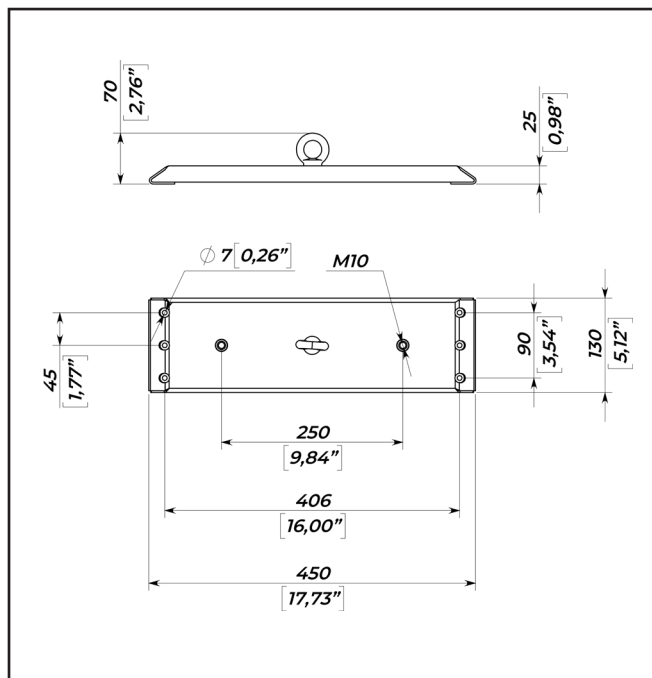
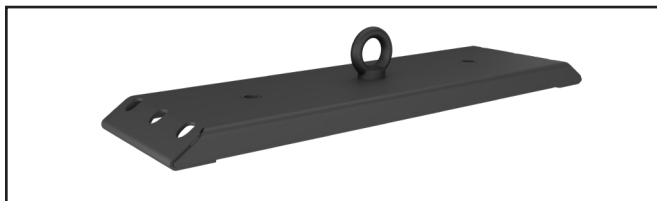


AWB-16

Safety Cable anchor wall bracket

The AWB-16 is a wall stud adapter plate is used to bridge two structural studs offering a secure surface mounting for Safety Cables. It bridges both standard 16" wood and metal construction wall stud spacing. The AWB-16 may be mounted over dry wall, plaster and other wall materials, as long as it is anchored into the structure. It can even be embedded underneath the wall material for a clean appearance.



SPECIFICATIONS:

Functions	Safety Cable anchor wall bracket	
Load limit	80 kg	176 lbs
Design factor	7:1 ratio	
Dimensions	450 x 130 x 70 mm	17,73" x 5,12" x 2,76"
Shipping dimensions	470 x 150 x 50 mm	18,50" x 5,91" x 1,97"
Net weight	1,66 kg	3,66 lbs
Shipping weight	1,9 kg	4,19 lbs

PACKAGE CONTENTS

1. AWB-16 - 1 pcs
2. Self-tapping screws for wood/metal - 6 pcs
3. Installation manual - 1 pcs

SAFETY INSTRUCTIONS

1. Entrust mounting equipment only to experienced professionals and strictly follow the provided safety instructions. Improperly installed equipment may result in property damage, personal injury and/or liability for the installing contractor.
2. **Always use safety cables!** This will prevent equipment from falling during setup or while exploitation.
3. Always carefully check the mounting surface of the wall. Make sure the wall or ceiling structure allows to hold the weight of the speaker including its bracket.
4. Only use appropriate fastening hardware.
5. Always make sure to securely use and lock all mounting bolts. Loose bolts may become unscrewed over time due to vibration which will then create a safety hazard.