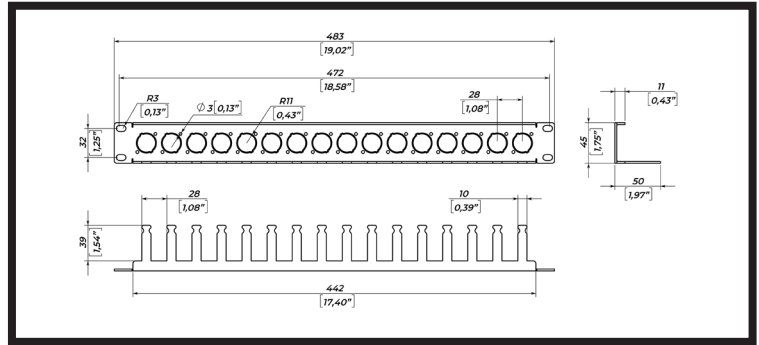
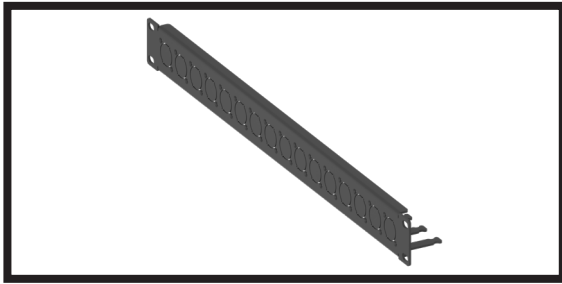
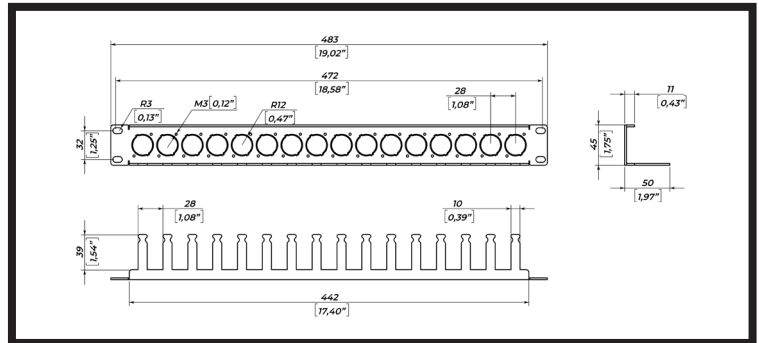
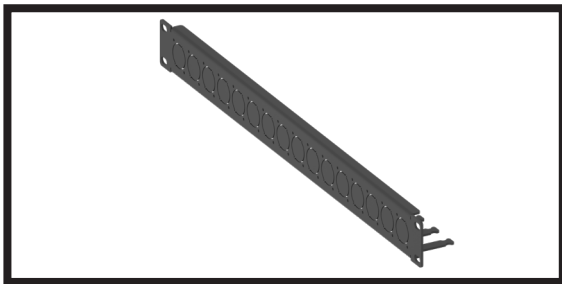


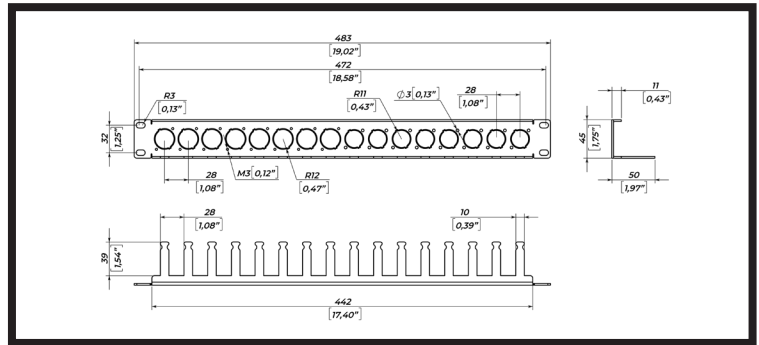
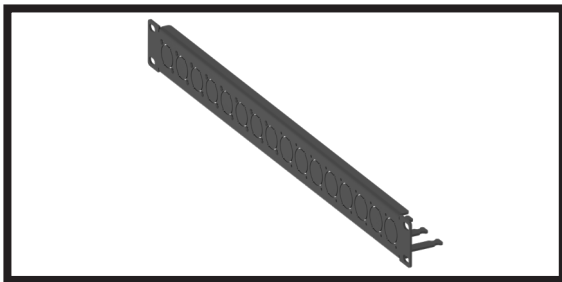
PP1U-SA16



PP1U-SD16



PP1U-SA8/SD8



SPECIFICATIONS:

PP1U-SA16

PP1U-SD16

PP1U-SA8/SD8

Functions

Patch panel for connectors

Connector

Series A - 16 pcs

Series D - 16 pcs

Series A - 8 pcs / Series D - 8 pcs

Size

1U

Net weight

0,5 kg / 1,1 lbs

Shipping weight

0,7 kg / 1,54 lbs

Dimensions

45 x 50 x 483 mm / 1,75" x 1,97" x 19,02"

Shipping dimensions

54 x 64 x 510 mm / 2,13" x 2,52" x 20,08"

COMPATIBILITY:

XLR, Jacks, speakON,
etherCon Series A

XLR, Phono, etherCon
Series D

XLR, Jacks, speakON, etherCon
Series A
XLR, Phono, etherCon Series D

SAFETY INSTRUCTIONS

1. Entrust mounting equipment only to experienced professionals and strictly follow the provided safety instructions. Improperly installed equipment may result in property damage, personal injury and/or liability for the installing contractor.
2. Only use appropriate fastening hardware.
3. Always make sure to securely use and lock all mounting bolts. Loose bolts may become unscrewed over time due to vibration which will then create a safety hazard.

www.mnmounting.com

info@mnmounting.com

2 Merezhna str., Bila Tserkva,
Kyiv region, 09100, Ukraine

EMEA & Asian region:
+32 (0) 472 630212

USA, LATAM, Canada, Australia
& New Zealand region:
+1 (562) 607 7348

