

# WBM-500

**Wall Mounted Beam**  
100 lbs (45 kg) max load

The WBM-500 is a universal wall mounted horizontal distance beam with M10 mounting points for U-brackets etc. This wall beam supports loudspeakers weighing up to 45 kg (100 lbs.) and comes with a design factor of 7:1.

Loudspeaker can easily be attached and aimed from walls and other vertical structures by way of the U-bracket with ease of installation and flexibility in adjustment.

The WBM-500 has features adjustable length 320 mm (12,60") - 520 mm (20,47"), with the step of 50 mm (1,97").



## SPECIFICATIONS:

Functions	Wall mounted beam	
Wall mounting plate	380 x 110 mm	14,96" x 4,33"
Features adjustable length	320 - 520 mm	12,60" x 20,47"
Mounting holes	M10	
Load limit	45 kg	100 lbs
Design factor	7:1 ratio	
Dimensions	344 x 380 x 110 mm	13,54" x 14,96" x 4,33"
Shipping dimensions	415 x 362 x 131 mm	16,34" x 14,25" x 5,16"
Net weight	3,63 kg	8 lbs
Shipping weight (2 pcs per box)	7,8 kg	17,2 lbs

[www.mnmounting.com](http://www.mnmounting.com)  
[info@mnmounting.com](mailto:info@mnmounting.com)  
2 Merezhna str., Bila Tserkva,  
Kyiv region, 09100, Ukraine

EMEA & Asian region:  
+32 (0) 472 630212  
USA, LATAM, Canada, Australia  
& New Zealand region:  
+1 (562) 607 7348



# WBM-500

Wall Mounted Beam  
100 lbs (45 kg) max load

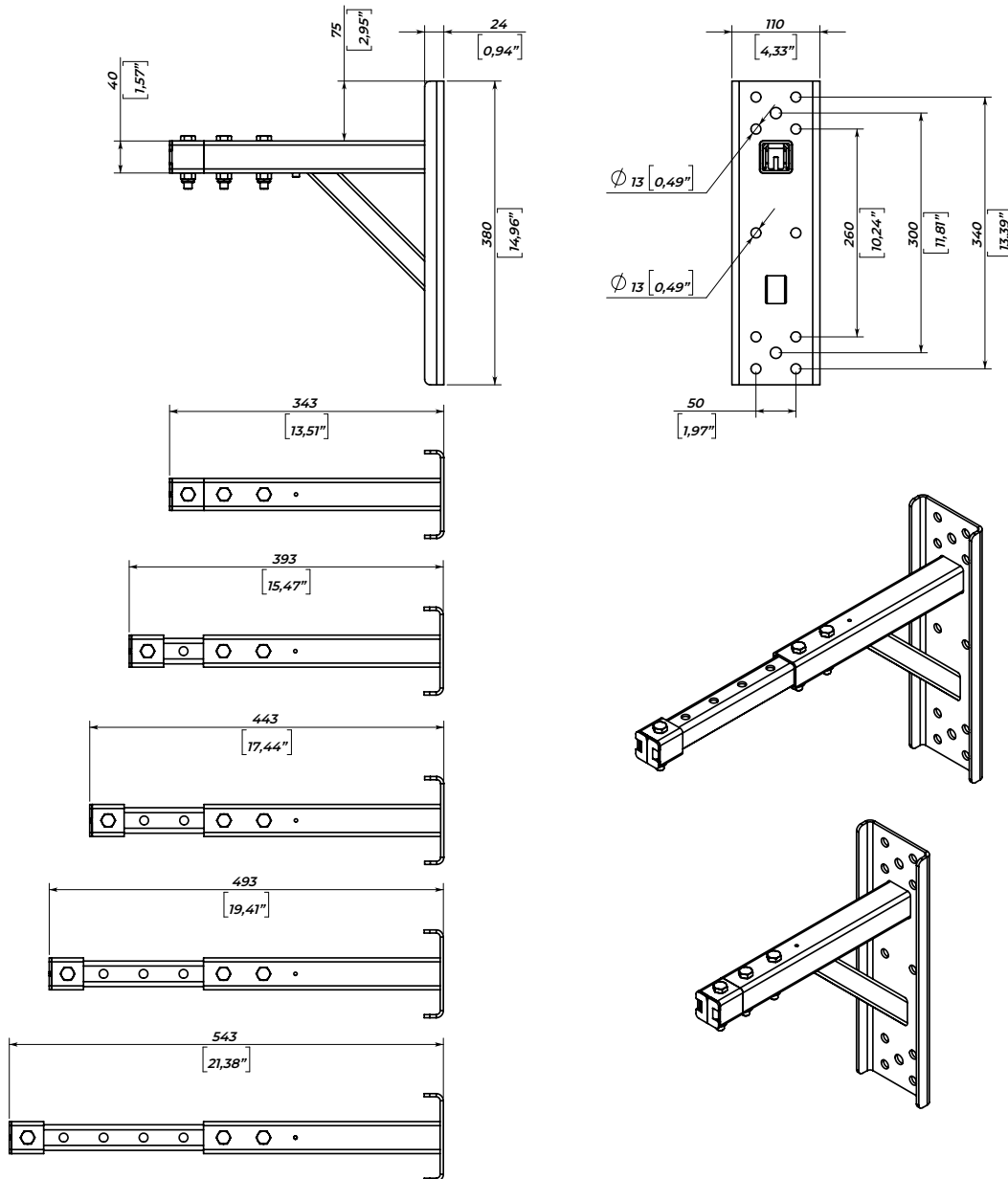
## PACKAGE CONTENTS

1. WBM-500 wall mounting - 2 pcs
2. Installation manual - 1 pcs

## OPTIONAL ACCESSORIES

UBR-300, UBR-414, UBR-500, UBR-816, LA-705  
and other U-brackets

## Dimensions



## SAFETY INSTRUCTIONS

1. Entrust mounting equipment only to experienced professionals and strictly follow the provided safety instructions. Improperly installed equipment may result in property damage, personal injury and/or liability for the installing contractor.
2. **Always use safety cables!** This will prevent equipment from falling during setup or while exploitation.
3. Always carefully check the mounting surface of the wall. Make sure the wall or ceiling structure allows to hold the weight of the speaker including its bracket.
4. Only use appropriate fastening hardware.
5. Always make sure to securely use and lock all mounting bolts. Loose bolts may become unscrewed over time due to vibration which will then create a safety hazard.

www.mnmounting.com  
info@mnmounting.com  
2 Merezhna str., Bila Tserkva,  
Kyiv region, 09100, Ukraine

EMEA & Asian region:  
+32 (0) 472 630212  
USA, LATAM, Canada, Australia  
& New Zealand region:  
+1 (562) 607 7348

